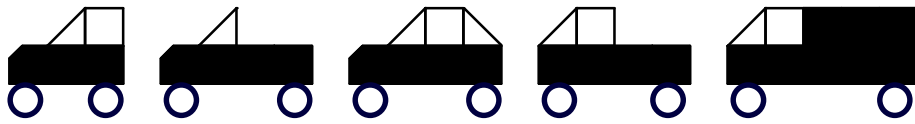
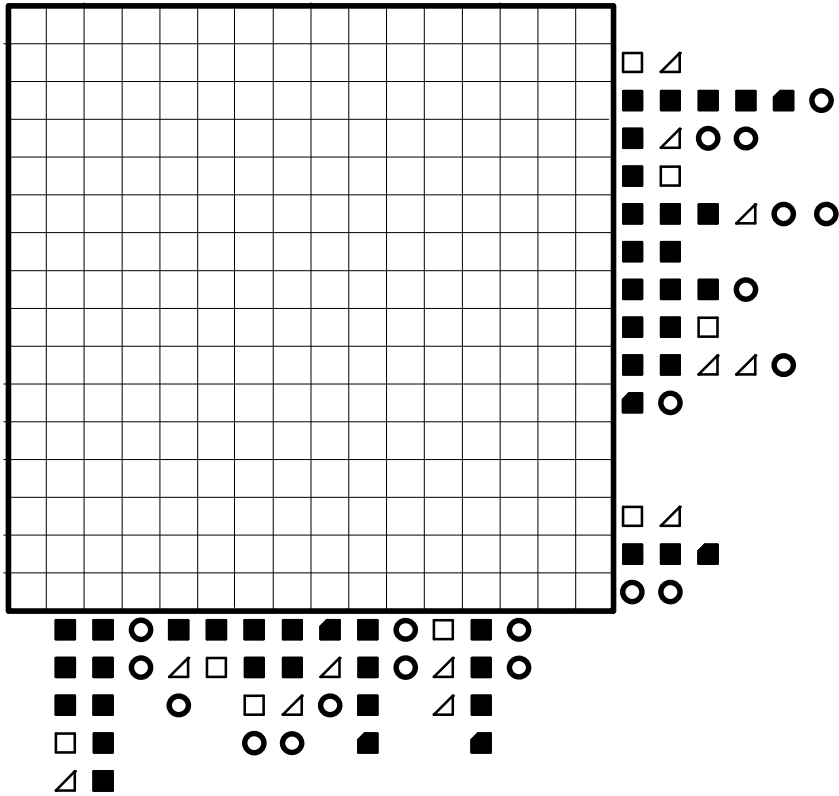


Diese Fahrzeuge müssen gesucht werden

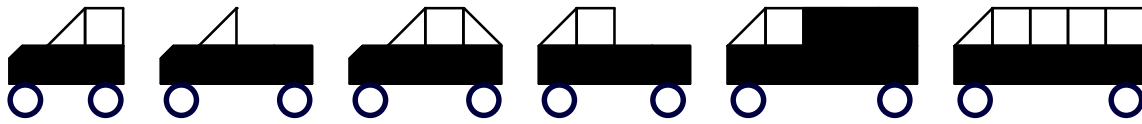


Bauteile ■ ■ ■ □ △ ○

Rätsel 201

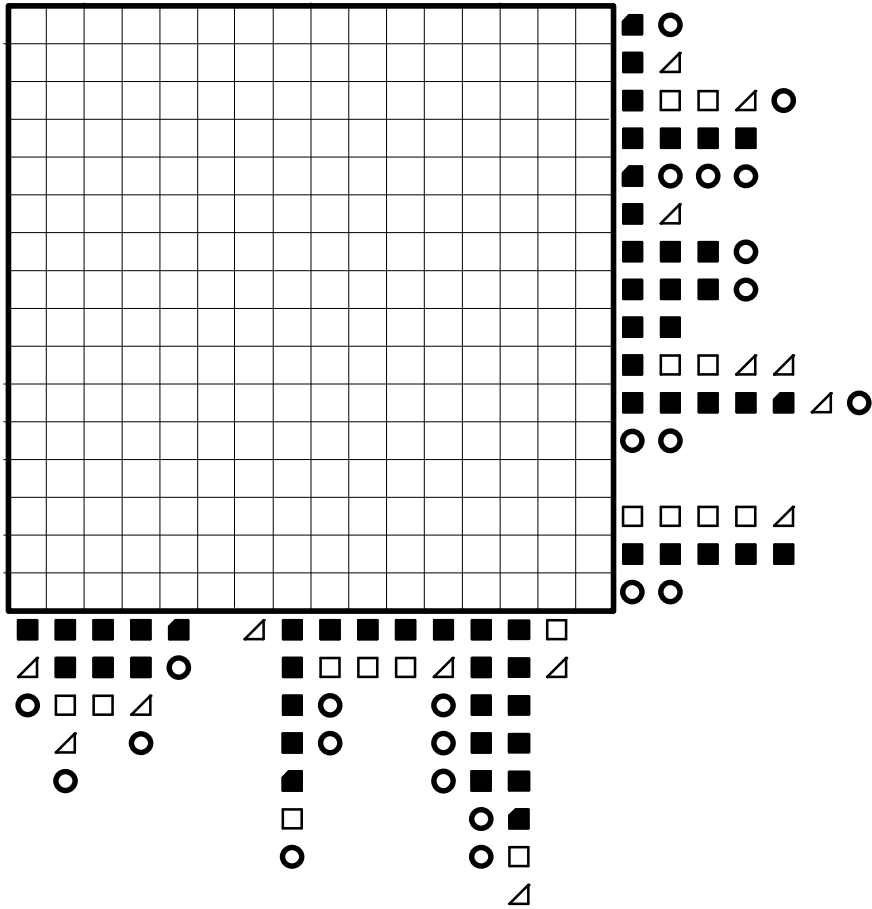


Diese Fahrzeuge müssen gesucht werden

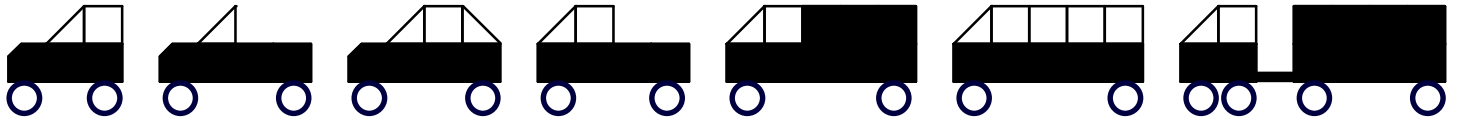


Bauteile ■ ■ ▣ ▤ ◯ ◯

Rätsel 301



Diese Fahrzeuge müssen gesucht werden



Bauteile

Rätsel 401

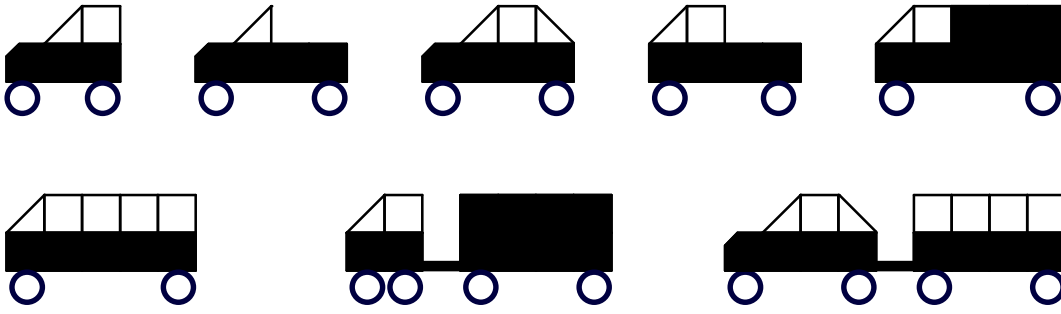
Legend symbols:

-
-

Key symbols for the grid:

- Row 1:
- Row 2:
- Row 3:
- Row 4:
- Row 5:
- Row 6:
- Row 7:
- Row 8:
- Row 9:
- Row 10:
- Row 11:
- Row 12:
- Row 13:
- Row 14:
- Row 15:
- Row 16:
- Row 17:
- Row 18:
- Row 19:
- Row 20:

Diese Fahrzeuge müssen gesucht werden



Bauteile 

Rätsel 501

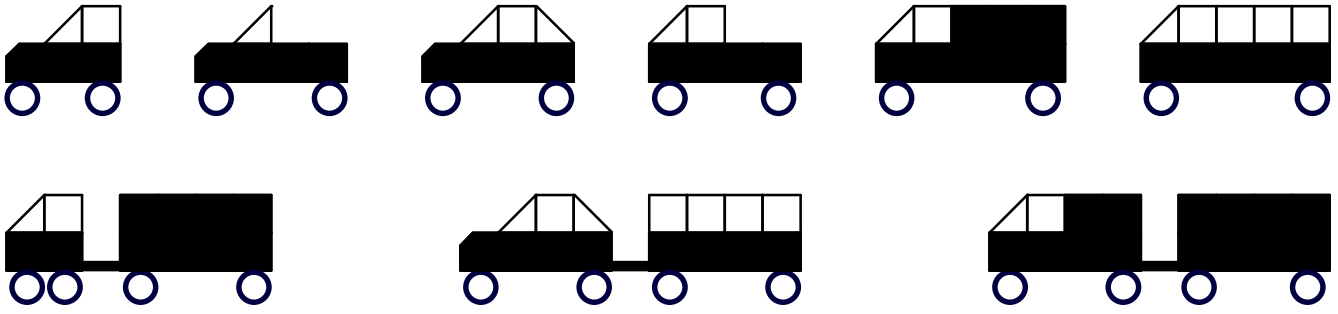
Legend symbols:

- (solid black square)
- ◼ (solid black square with a notch)
- (hollow square)
- △ (hollow triangle)
- (hollow circle)
- (solid horizontal line)

Key symbols for each row (R1-R20) and column (C1-C20):

- R1: ■, □, ○
- R2: ■, ■, ■, △, ○, ○
- R3: ■, ■, △, △, ○
- R4: ■, ■, □
- R5: ■, ■, △, ○, ○
- R6: □, □, □, □, □, △, △
- R7: ■, ■, ■, ■, ■, ■, ■, ■, ■, ○, —
- R8: ■, ○, ○, ○, ○
- R9: ■, □
- R10: ■, ■, ■, △, ○, ○
- R11: ■, ■
- R12: ■, ■, □, □, □, □, △
- R13: ■, ■, ■, ■, ■, ■, ■, ○
- R14: ○, ○, —
- R15: ■, ■, ■, ■, □, □, △, ○
- R16: ■, ■, ■, ■, ■, ■, △, ○
- R17: ○, ○
- C1: ■, ■, ■, □, △, ○, ○, ○, ○, ○, —
- C2: ■, ■, ■, □, □, □, □, □, □, △, ○, ○, ○, ○
- C3: ■, ■, ■, □, □, □, □, □, □, △, ○, ○, ○, ○
- C4: ■, ■, ■, □, □, □, □, □, □, △, ○, ○, ○, ○
- C5: ■, ■, ■, □, □, □, □, □, □, △, ○, ○, ○, ○
- C6: ■, ■, ■, □, □, □, □, □, □, △, ○, ○, ○, ○
- C7: ■, ■, ■, □, □, □, □, □, □, △, ○, ○, ○, ○
- C8: ■, ■, ■, □, □, □, □, □, □, △, ○, ○, ○, ○
- C9: ■, ■, ■, □, □, □, □, □, □, △, ○, ○, ○, ○
- C10: ■, ■, ■, □, □, □, □, □, □, △, ○, ○, ○, ○
- C11: ■, ■, ■, □, □, □, □, □, □, △, ○, ○, ○, ○
- C12: ■, ■, ■, □, □, □, □, □, □, △, ○, ○, ○, ○
- C13: ■, ■, ■, □, □, □, □, □, □, △, ○, ○, ○, ○
- C14: ■, ■, ■, □, □, □, □, □, □, △, ○, ○, ○, ○
- C15: ■, ■, ■, □, □, □, □, □, □, △, ○, ○, ○, ○
- C16: ■, ■, ■, □, □, □, □, □, □, △, ○, ○, ○, ○
- C17: ■, ■, ■, □, □, □, □, □, □, △, ○, ○, ○, ○
- C18: ■, ■, ■, □, □, □, □, □, □, △, ○, ○, ○, ○
- C19: ■, ■, ■, □, □, □, □, □, □, △, ○, ○, ○, ○
- C20: ○, ○, ○, ○, ○, ○, ○, ○, ○, ○, ○, ○, ○, ○

Diese Fahrzeuge müssen gesucht werden



Bauteile

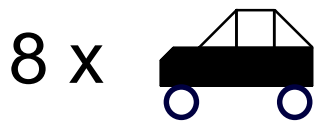
Rätsel 601

The puzzle consists of a large grid with a legend on the right and bottom. The legend symbols are:

- Black square
- White square
- White triangle
- Blue circle
- Black dash

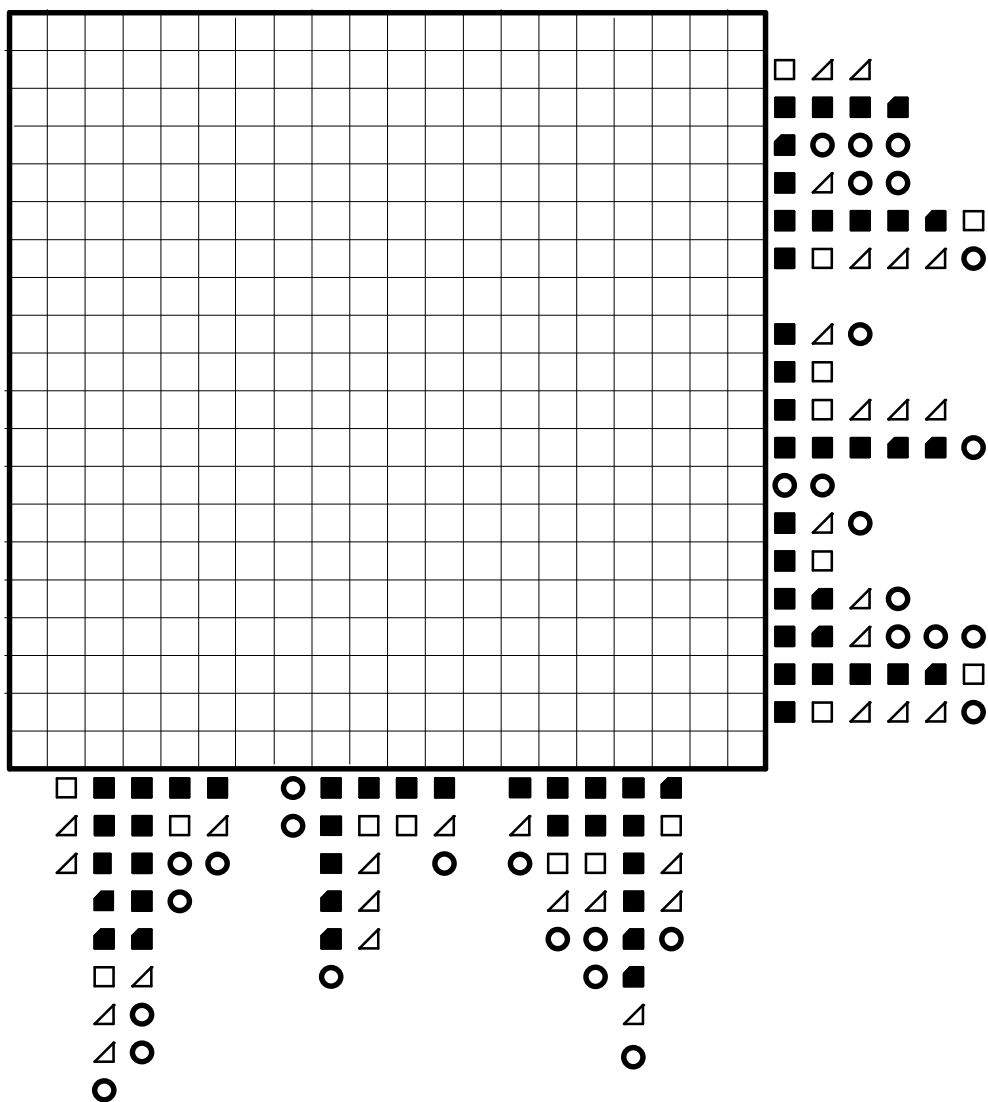
The grid is a 20x20 square. The legend on the right shows the symbols arranged in a pattern that corresponds to the vehicles in the first image. The legend on the bottom shows the symbols arranged in a pattern that corresponds to the vehicles in the second image.

Diese Fahrzeuge müssen gesucht werden



Bauteile         

Rätsel 701

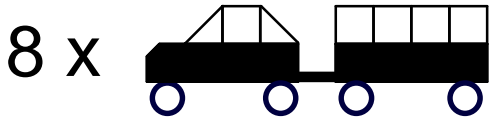


The puzzle consists of a 20x20 grid. The legend on the right and bottom defines the symbols used in the grid:

- Black square
- White square
- Black triangle
- White triangle
- Black circle
- White circle

The grid contains a pattern of these symbols that, when interpreted, forms the shape of a car. The car is 8 units wide and 1 unit high. The legend on the right shows the symbols used in the grid, and the legend on the bottom shows the symbols used in the grid.

Diese Fahrzeuge müssen gesucht werden



Bauteile 

Rätsel 1001

