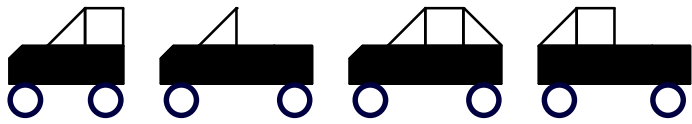
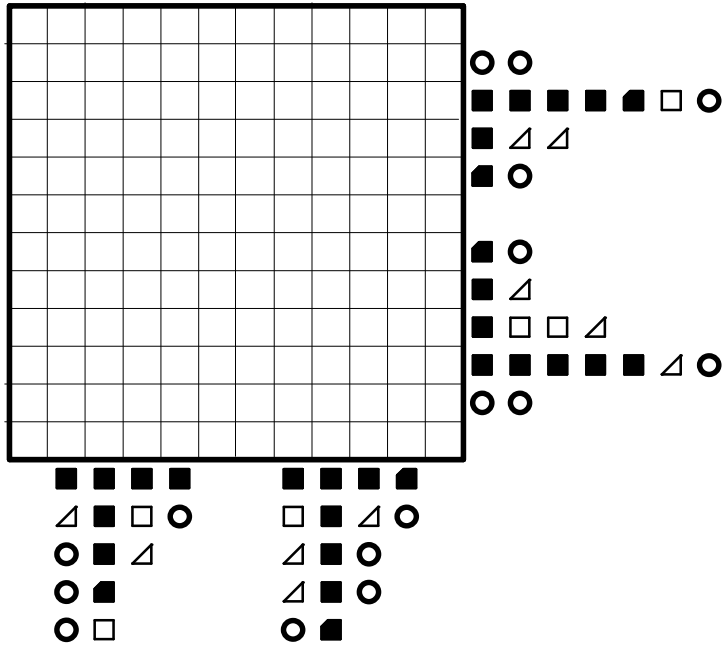


Diese Fahrzeuge müssen gesucht werden

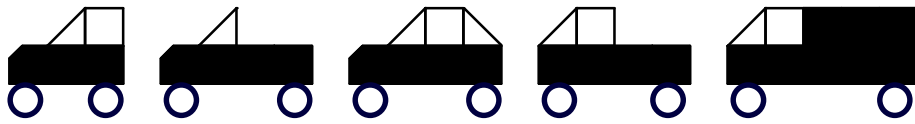


Bauteile ■ ■ ▣ ▤ ◯ ◯

Rätsel 105

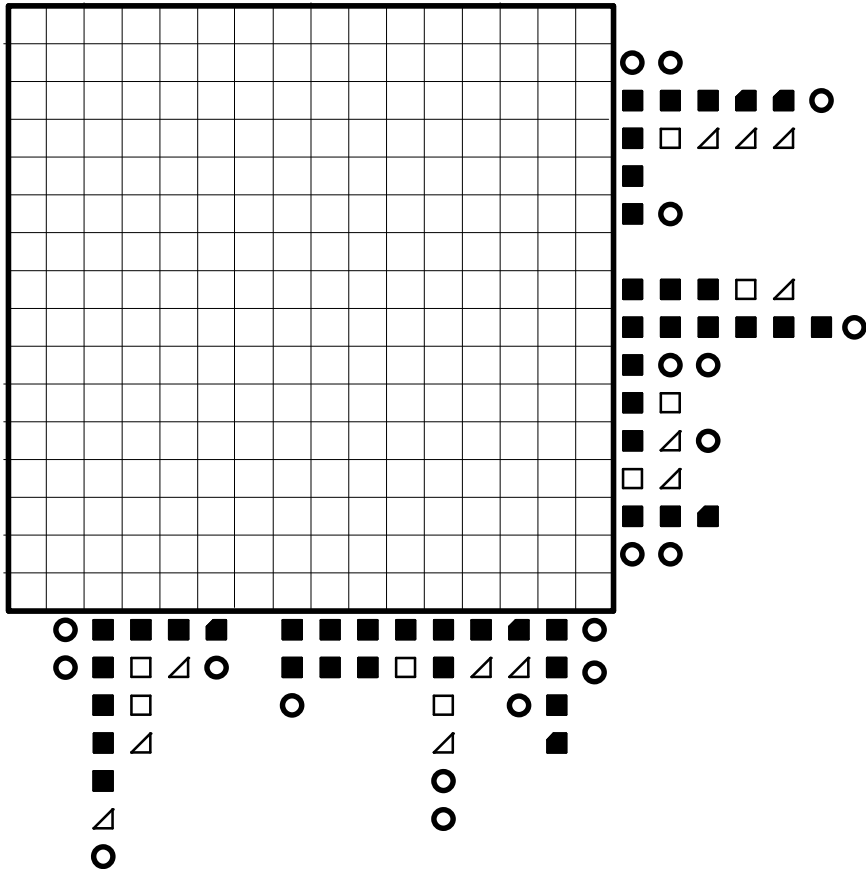


Diese Fahrzeuge müssen gesucht werden

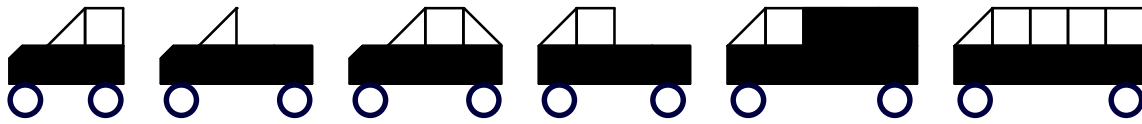


Bauteile ■ ■ ■ ■ □ □ △ △ ○ ○

Rätsel 205

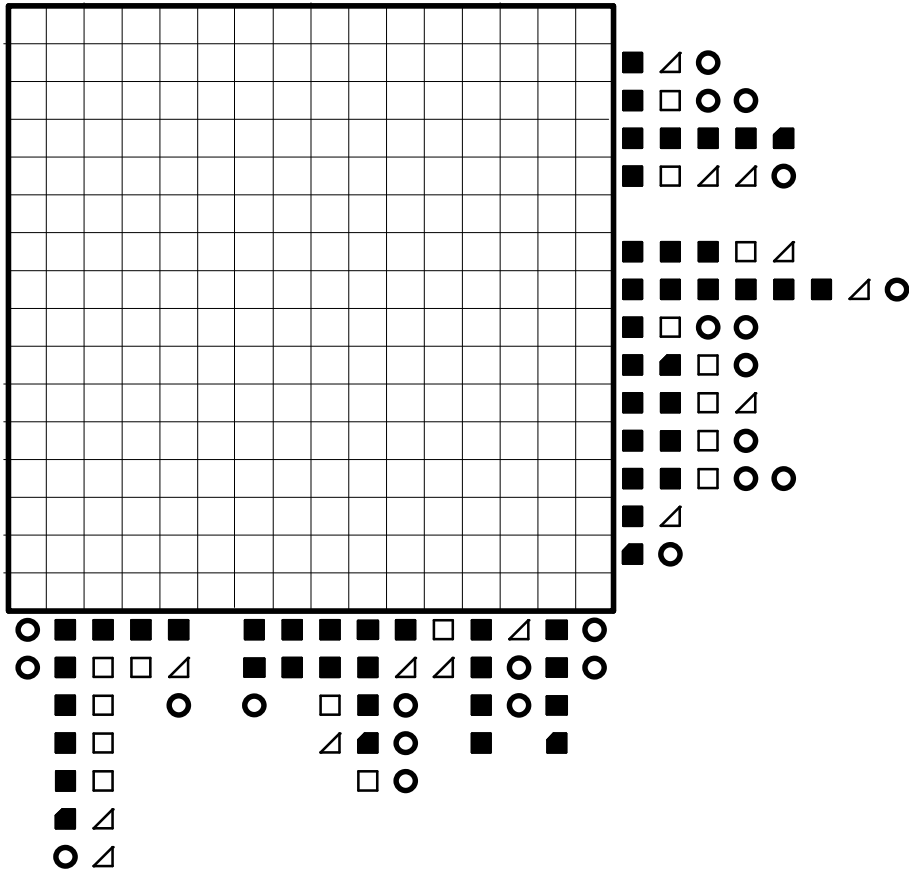


Diese Fahrzeuge müssen gesucht werden

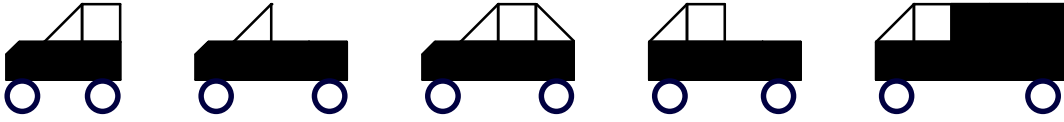


Bauteile ■ ■ ■ □ △ ○

Rätsel 305



Diese Fahrzeuge müssen gesucht werden



Bauteile ■ ■ ▣ ▣ △ △ ○ ○ — —

Rätsel 505

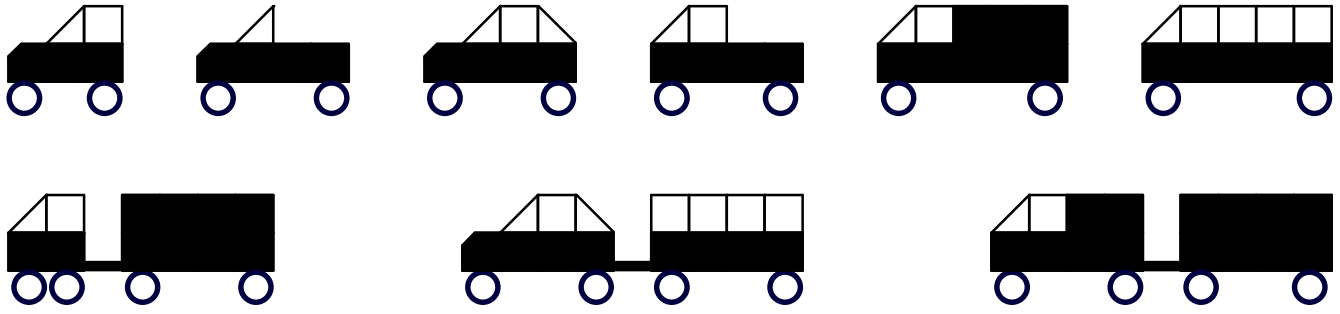
A large 20x20 grid puzzle. To the right of the grid is a legend for the symbols used in the puzzle, consisting of two groups of symbols. The first group contains: a row of four open circles, a row of nine solid black squares followed by one solid black square, one open circle, and one horizontal dash; a row of six open squares followed by two open triangles; a row of one solid black square followed by one open triangle; a row of one solid black square, one solid black square, one open circle, and one open circle; a row of one solid black square followed by one open triangle; a row of one solid black square, one open square, one open triangle, one open triangle, and one open circle; a row of one solid black square, one solid black square, one solid black square, one solid black square, one open triangle, and one open circle; a row of one solid black square, one open square, and one open circle; a row of one solid black square, one solid black square, and one open circle; a row of seven solid black squares; a row of one solid black square, one open square, one open square, one open square, one open square, one open triangle, and one open circle.

The second group of symbols contains: a row of four solid black squares, one open square, and one open triangle; a row of seven solid black squares, one solid black square, one open circle, one open circle, and one horizontal dash; a row of five solid black squares, one open circle, one open circle, and one open circle; a row of one open square and one open triangle.

At the bottom of the grid is a key consisting of a horizontal line of symbols: △, ■, ○, ■, ■, ■, ▣, ■, ■, ■, ■, ■, ■, ■, ■, ■, ■, ■, ■, ■. Below this line are several rows of symbols:

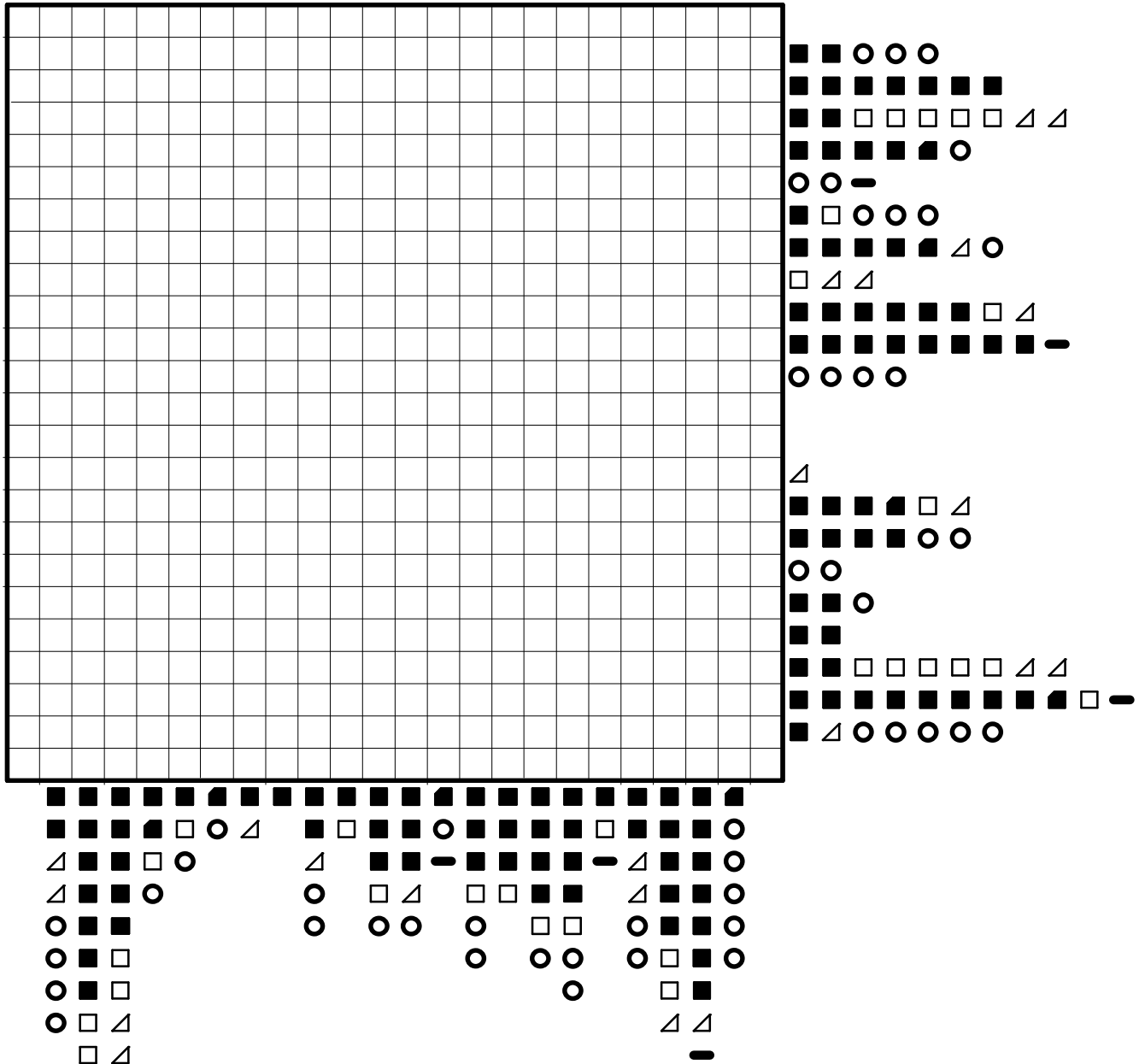
- Row 1: ■, ○, ■, ■, ▣, ○, ■, ■, ■, ■, ▣, ▣, ■, ■, ■, ■, ▣
- Row 2: ■, ○, ■, ■, ○, —, ■, ■, ■, ■, ▣, ■, ▣, ▣, ▣, ▣, ▣, ▣, ▣, ▣
- Row 3: ▣, ○, ■, ■, ▣, △, ■, ■, ▣, ○, ▣, ▣, ▣, ■, ▣
- Row 4: ■, ▣, ▣, ○, ▣, ▣, ○, ▣, ▣, ▣, ▣, ○, ▣, ○
- Row 5: ▣, ▣, △, ▣, ▣, —, ▣, ○, ○
- Row 6: ▣, ▣, ▣, ▣, ▣, ▣, ▣, ○, ○
- Row 7: ○
- Row 8: ▣, ▣, ▣, ▣, ▣, ○
- Row 9: ○

Diese Fahrzeuge müssen gesucht werden

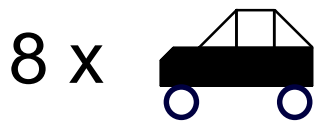


Bauteile ■ ■ ■ ■ □ □ △ △ ○ ○ - -

Rätsel 605

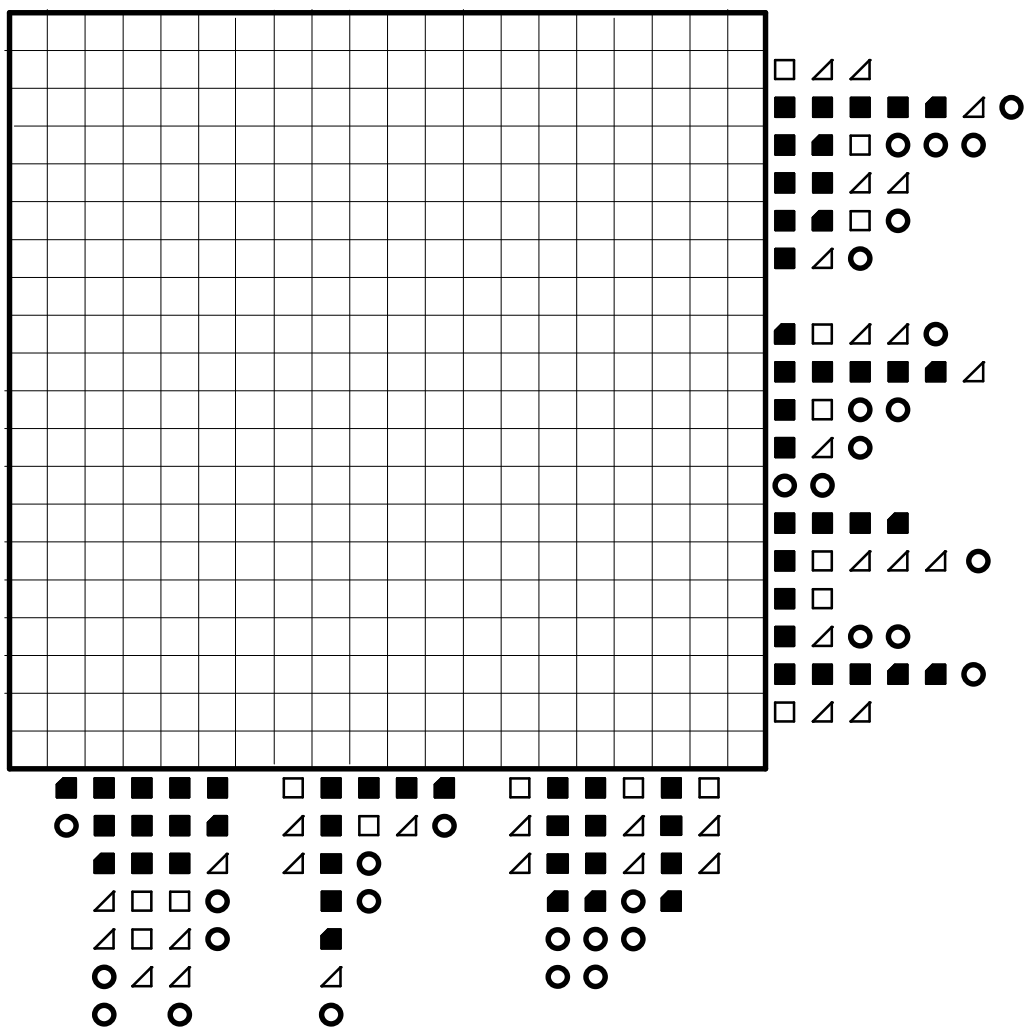


Diese Fahrzeuge müssen gesucht werden



Bauteile 

Rätsel 705



The puzzle grid is 20 columns wide and 20 rows high. The symbols are arranged as follows:

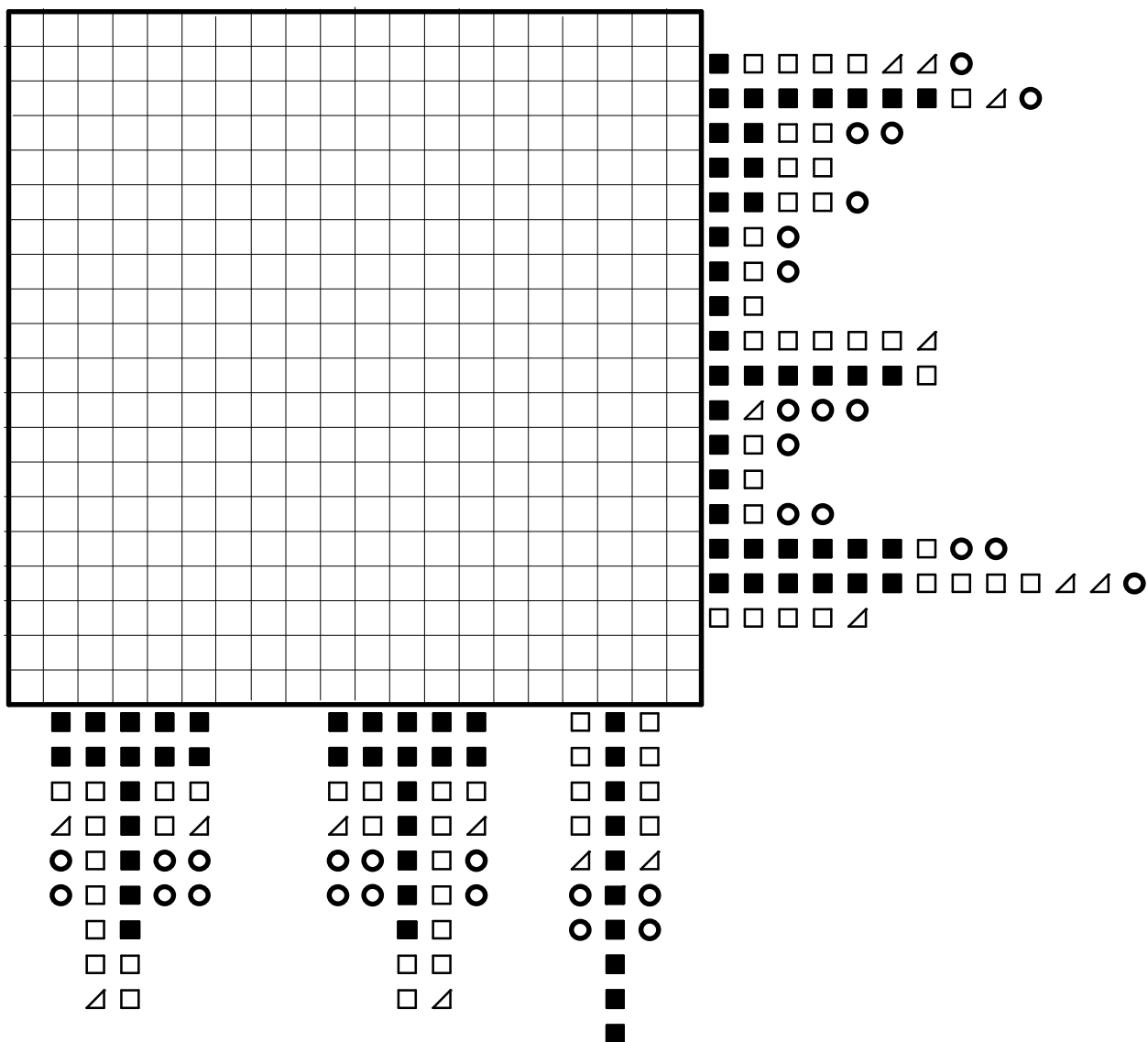
- Row 1:** White square, triangle, triangle
- Row 2:** 2x2 black square, 2x1 black rectangle, triangle, circle
- Row 3:** 2x2 black square, 2x1 black rectangle, white square, circle, circle, circle
- Row 4:** 2x2 black square, 2x1 black rectangle, triangle, triangle
- Row 5:** 2x2 black square, 2x1 black rectangle, white square, circle
- Row 6:** 2x2 black square, triangle, circle
- Row 7:** 2x1 black rectangle, white square, triangle, triangle, circle
- Row 8:** 2x2 black square, 2x1 black rectangle, 2x1 black rectangle, triangle
- Row 9:** 2x2 black square, white square, circle, circle
- Row 10:** 2x2 black square, triangle, circle
- Row 11:** circle, circle
- Row 12:** 2x2 black square, 2x1 black rectangle
- Row 13:** 2x2 black square, white square, triangle, triangle, triangle, circle
- Row 14:** 2x2 black square, white square
- Row 15:** 2x2 black square, triangle, circle, circle
- Row 16:** 2x2 black square, 2x1 black rectangle, 2x1 black rectangle, circle
- Row 17:** white square, triangle, triangle
- Row 18:** 2x2 black square, 2x1 black rectangle, 2x1 black rectangle, white square, white square, white square
- Row 19:** circle, 2x2 black square, 2x1 black rectangle, triangle, white square, triangle, circle, triangle, 2x2 black square, triangle, triangle
- Row 20:** triangle, 2x2 black square, circle, triangle, 2x2 black square, triangle, triangle

Diese Fahrzeuge müssen gesucht werden



Bauteile    

Rätsel 805



The puzzle consists of a 20x20 grid. To the right of the grid is a legend showing the following pieces:

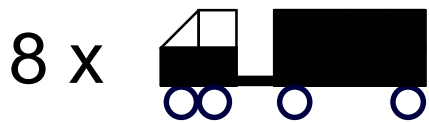
- Black square
- White square
- Black triangle
- Blue circle


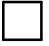






Below the grid are three rows of pieces to be placed:

- Row 1: 5 black squares, 5 black squares, 1 white square, 1 black square, 1 white square
- Row 2: 5 black squares, 5 black squares, 1 white square, 1 black square, 1 white square
- Row 3: 1 white square, 1 black square, 1 white square, 1 black square, 1 white square

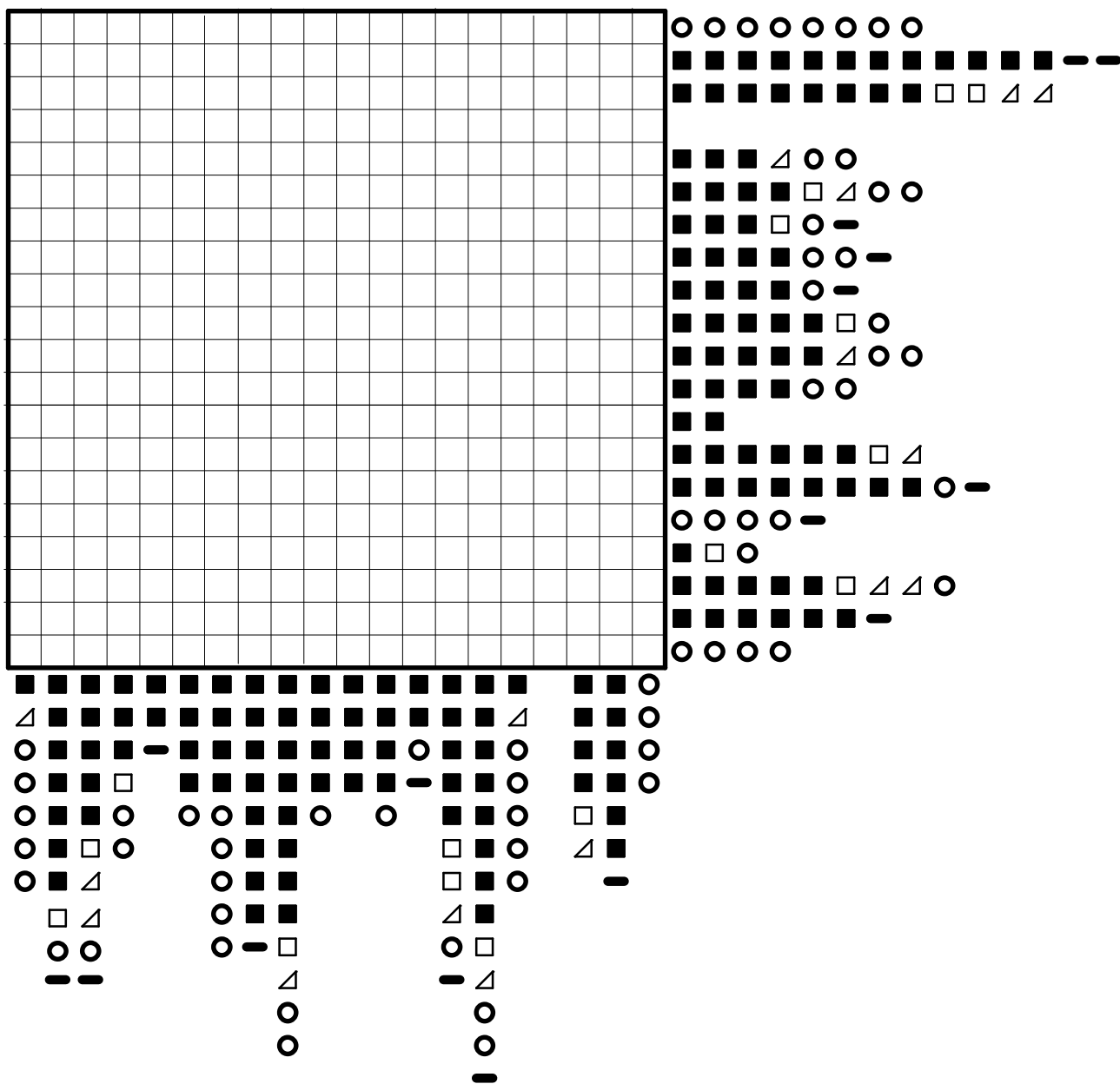
The legend also shows various combinations of these pieces, including the bus icon, which is composed of 8 black squares, 2 white squares, 2 black triangles, and 2 blue circles.

Diese Fahrzeuge müssen gesucht werden

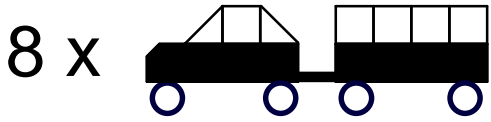


Bauteile        

Rätsel 905

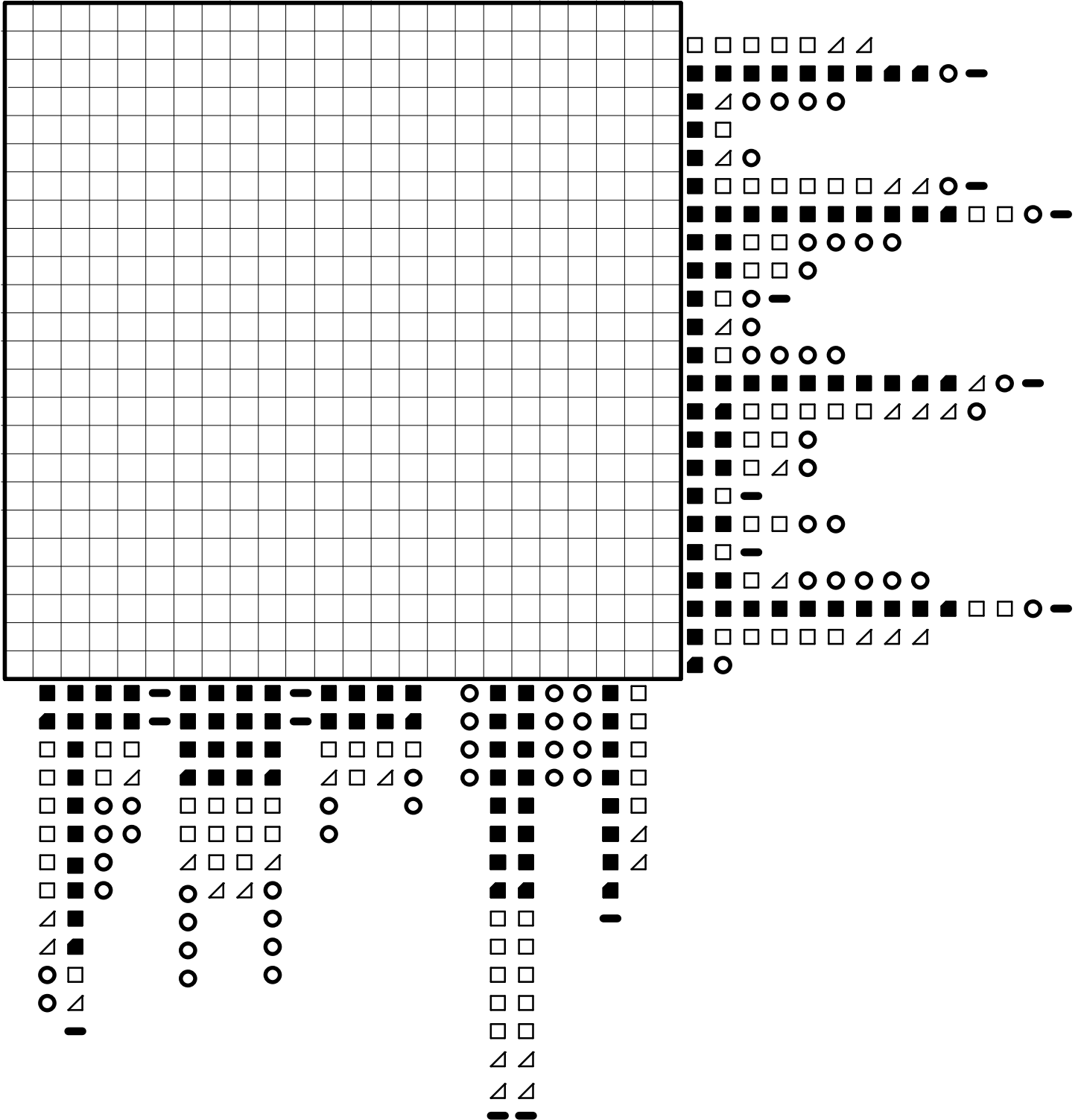


Diese Fahrzeuge müssen gesucht werden



Bauteile 

Rätsel 1005



The puzzle consists of a 30x30 grid. To the right of the grid is a legend for the symbols used in the puzzle:

- □ □ □ □ △ △
- ■ ■ ■ ■ ■ ■ ■ ○ -
- △ ○ ○ ○ ○
- □
- △ ○
- □ □ □ □ □ □ △ △ ○ -
- ■ ■ ■ ■ ■ ■ ■ ■ □ □ ○ -
- □ □ ○ ○ ○ ○
- ■ □ □ ○
- □ ○ -
- △ ○
- □ ○ ○ ○ ○
- ■ ■ ■ ■ ■ ■ ■ ■ △ ○ -
- ■ □ □ □ □ □ △ △ △ ○
- ■ □ □ ○
- ■ □ △ ○
- □ -
- ■ □ □ ○ ○
- □ -
- ■ □ △ ○ ○ ○ ○ ○
- ■ ■ ■ ■ ■ ■ ■ ■ □ □ ○ -
- □ □ □ □ □ △ △ △
- ○

Below the grid is another legend for symbols used in the puzzle:

- ■ ■ ■ - ■ ■ ■ ■ - ■ ■ ■ ■ ○ ■ ■ ○ ○ ■ □
- ■ ■ ■ - ■ ■ ■ ■ - ■ ■ ■ ■ ○ ■ ■ ○ ○ ■ □
- ■ □ □ ■ ■ ■ ■ □ □ □ □ ○ ■ ■ ○ ○ ■ □
- ■ □ △ ■ ■ ■ ■ △ □ △ ○ ○ ■ ■ ○ ○ ■ □
- ■ ○ ○ □ □ □ □ ○ ○ ■ ■ ■ □
- ■ ○ ○ □ □ □ □ ○ ■ ■ ■ □ △
- ■ ○ △ □ □ △ ■ ■ ■ □ △
- ■ ○ ○ △ △ ○ ■ ■ ■ ■
- △ ■ ○ ○ ○ ○ □ □ -
- △ ■ ○ ○ ○ ○ □ □
- □ ○ ○ □ □ □ □ □ □ □ □
- △ ○ ○ □ □ □ □ □ □ □ □
-
- △ △
- △ △
- -

